

The Schuylkill Area Community Foundation helps people create funds to do good things today and lasting good for tomorrow.

It is a simple, personal and powerful way to give back to your community.

A Lasting Tribute

The Community Foundation is privileged to facilitate the philanthropy of very special people who understand that quality of life requires 'giving back' so others might realize the unique attributes of our area, have access to the arts, education, healthcare, human services and enjoy safe neighborhoods. Since 1967, Schuylkill Area Community Foundation has assisted individuals and families, businesses, civic groups and other nonprofit organizations with realizing their goals for philanthropy.

Together we can improve the quality of life for those living and working in Schuylkill County.



216 South Centre Street
Pottsville, PA 17901
(570) 624-7223

Amanda Campbell
Executive Director
sacfcampbell@aol.com

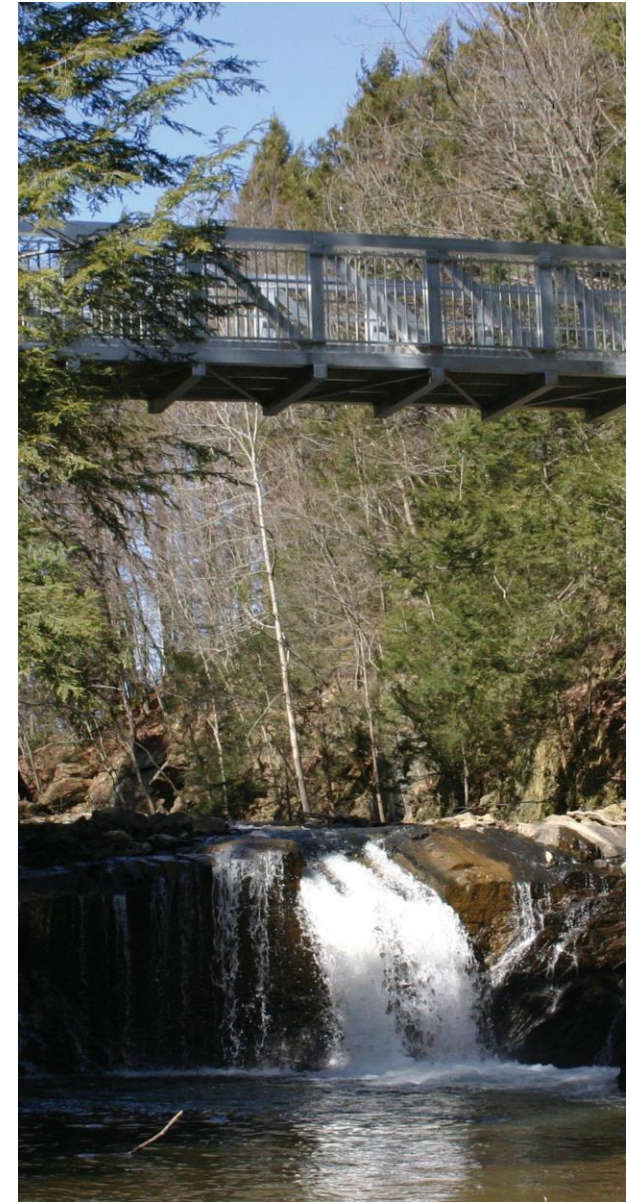
Sharon Koszyk
Administrative Director
skoszyk@verizon.net

Marybeth Matz
Scholarships and Awards
Administrator
mmatz1@verizon.net



*Disclosure:
The official registration and financial information for Schuylkill Area Community Foundation is registered with the Pennsylvania Department of State and may be obtained by calling toll free, within Pennsylvania, 1-800-732-0999.
Registration does not imply endorsement.*

Memorial Giving
A meaningful way to honor a loved one



Memorial Giving

When a loved one passes away, you are faced with a painful loss and a multitude of decisions. Many families and friends wish to create a memorial to honor his or her life. Memorial Giving through the Schuylkill Area Community Foundation gives you time to consider how best to establish a tribute that will represent the difference that this special person made in the lives of those around him or her.

Memorial Giving allows the individuals to establish a named endowment fund or add to an existing fund that will perpetuate that person's memory.

What is a Memorial Fund?

A Memorial Fund is a charitable endowment fund established at the Schuylkill Area Community Foundation to accept donations in memory of a loved one. When you and/or your family are ready, you can take the time that you need to consider all options and decide which community organizations represent the memory of your loved one.

What endowment funds are already established at the Foundation?

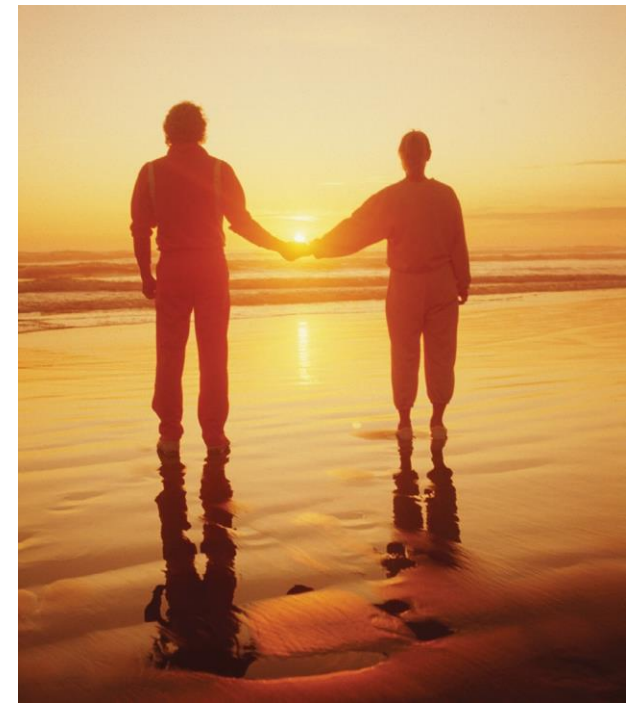
A complete list of endowment funds is available on the website at www.sacfoundation.com or ask your funeral director to contact the Foundation staff.

Will I Know Who Made Gifts in Memory of my Loved One?

Yes. The Foundation will acknowledge every gift by sending a thank you letter to the donor on your behalf. You will receive copies of the letters. All gifts are fully tax-deductible to the fullest extent allowed by law.

What Can I Do With the Donations Made to the Memorial Fund?

Donations may be used to establish a named endowment fund or add to an existing fund. You have many options through the Foundation. Donations may be used for student awards or scholarships, for a specific field of interest – such as Arts & Culture, Environment, Human Services, and for specific organizations that are recognized by the Internal Revenue Service as tax-exempt, such as one's place of worship, public libraries, nonprofit organizations and most educational institutions.



How Do I Establish A Memorial Fund?

You may select the name of your fund and include it in the obituary using wording such as, in lieu of flowers, memorial contributions can be made in

name and sent to:

Schuylkill Area Community Foundation
216 South Centre Street
Pottsville, PA 17901

Contact Schuylkill Area Community Foundation at 570-624-7223 (or ask the funeral director to contact us) so that we are prepared to accept donations.

Complete the paperwork and we will assist you with the fund agreement and all the details that will help you create a lasting tribute for your loved one.

Please accept our condolences on the loss of your loved one. If you have any questions, please call us at 570-624-7223.