

# WHAT IS A HERO?

SCHUYLKILL AREA COMMUNITY FOUNDATION  
2021 ANNUAL REPORT



# Celebrating the EVERYDAY HEROES in Our Community

Over time, we have learned that the label hero means something different to each one of us. As children, superheroes born from comic books, movies, and tv shows inspired us to be leaders, help those around us, and to heroically save the day.

As we matured into adulthood, we slowly recognized that a hero can be a “real” person: a friend, a leader, or someone who gave us encouragement or a helping hand when we needed it the most. These people make huge impacts on our lives without wearing a special cape, uniform, or costume, although some would like to occasionally.

Our Schuylkill County community is full of heroes! We have seen generosity and selflessness multiply over the past 54 years. Our donors are heroes to the nonprofits and students that are supported through generous donations to specific funds with Schuylkill Area Community Foundation. Our nonprofit leaders are heroes for executing the vision and mission of the organizations and agencies that serve our community. Our students are heroes for striving to learn how to continue to support our community.

I hope that after you look through our book of heroes, you take a moment or two in your life to witness some of the amazingly generous people who are around us every day.

*Amanda Campbell*

Amanda Campbell, Executive Director



## Mission Statement

The mission of the Schuylkill Area Community Foundation is to serve the interests of the philanthropic donors and to become stewards of financial gifts that support our community.

## Vision Statement

Schuylkill Area Community Foundation envisions a community that embraces philanthropy to sustain generations today and tomorrow!

## Foundation Leadership

### BOARD OF DIRECTORS

Marie Beauchamp, Director	Ann F. Snyder, Director
Richard L. Berger, Secretary	Mark D. Snyder, Ed. D., Director
James E. Bohorad, Esq., Director	Stacey Staudenmeier, Director
Eric Fryer, Director	Keith J. Strouse, Esq., Treasurer
Gary R. Glessner, President	David Truskowsky, Director
John Gradwell, Director	Zarina Wahhab, Director
M. Irvil Kear, D.A., Director	Joann H. Zogby, Ed.D., Vice-President
G. Fred Schilling, Director	

### STAFF

Amanda Campbell, Executive Director  
acampbell@sacfoundation.com  
Joan Breslin, Office Administrator  
jbreslin@sacfoundation.com

## Contents

Options for Giving . . . . .	1
Sharon Koszyk Retirement . . . . .	2
Schuylkill Gives . . . . .	3
Scholarships, Awards & Grants . . . .	4
New Funds . . . . .	5
Fund Composition . . . . .	6 - 9
Philanthropists . . . . .	10 - 12
Financial Report . . . . .	13

## HERO FUNDS

### Hunter William Renninger Memorial Scholarship Fund

Heath and Heather Renninger established a scholarship fund to celebrate the life of their three-year-old son who passed away on January 21, 2011. Hunter had great passion for family, friends, playgrounds, school buses, sports and the outdoors. The scholarship fund will forever keep Hunter's memory alive and pay tribute to the character of so many young boys and girls in our local communities. It comforts the family to know that Hunter's scholarship fund will support our future leaders in both Blue Mountain and Minersville Area school districts for years to come.

## Types of Funds to Consider

### Designated Funds

#### ONGOING SUPPORT

Donors may create a fund at the Foundation to benefit a specific organization or to establish an education award. In the event the specified organization ceases to exist, the Foundation is able to adjust the distribution to insure the fund carries out its original purpose and intent.

### Donor Advised Funds

#### INVOLVED ANNUAL GIVING

Through Donor Advised Funds, a donor can have an active hand in his or her charitable giving by having the right to recommend annually to the Foundation which organizations should be supported by the fund. Grants are then made, in the name of the fund, to qualified charities. Since the Foundation administers the fund, donors are assured of its permanence well beyond their own ability to advise.

### Field of Interest Funds

#### TARGET SPECIFIC ISSUES

Field of Interest Funds provide donors the opportunity to support particular areas of interest that reach many organizations. The Foundation distributes earnings to the most appropriate programs within the areas of arts and culture, education, environment, health and wellness, and human services.

### Scholarship Funds

#### EDUCATIONAL SUPPORT

Donors may create scholarships to support students who are graduating from a particular school, attending a particular school, or studying a specific field. Each scholarship is unique and is accomplishing the criteria set forth by the donor.

### Unrestricted Funds

#### PROACTIVE AND RESPONSIVE

Unrestricted Funds provide the Foundation with the greatest flexibility to meet the most pressing and ever changing needs and opportunities within our community.

## Why Establish a Fund?

*The Schuylkill Area Community Foundation offers donors - individuals, families, businesses and nonprofit organizations - the flexibility and expertise needed to help them determine which type of fund best matches their interests and will achieve their philanthropic goal.*

Minimum amount required to establish a fund:

\$5,000 - to establish an annual award for a high school graduate

\$5,000 - to establish any other fund

\$20,000 - to establish a scholarship fund

## Categories of Giving

*There are many ways to give through the Community Foundation. Here are some of the most common methods that donors choose:*

### Cash

Cash is the easiest way to contribute. Donors who make gifts of cash are eligible for a charitable deduction in the year the gift was made.

### Appreciated Stock

Stocks may be donated to the Community Foundation as a charitable gift. Donors are eligible for a tax deduction for the fair market value of the stock and can avoid a capital gains tax.

### Bequests

A charitable bequest is the most common form of planned giving and it provides important estate tax advantages. Donors will continue their charitable legacies for years to come by including a gift in their will to support the causes or organizations that are important to them. SACF has recommended legal language for all types of charitable bequests.

### Retirement Plans and Life Insurance

Donors can use assets held in an individual retirement account (IRA), 401(k), 403(b), or a similar account to start a fund at the Community Foundation at the time of their death. These accounts, while very attractive to defer tax during lifetime, are the most heavily taxed assets in an estate at death.

### Charitable IRA Opportunity

Donors who are age 70-1/2 and older are able to make donations to charity from their IRA without needing to claim that distribution as income. To transfer a gift from your IRA, please contact your IRA administrator directly. Transfers from IRAs can be made to designated funds, field of interest funds, scholarship funds, and agency endowments. This provision does NOT allow transfers to Donor Advised Funds.



## A HERO IS

*The board member who called a friend to help make a repair at their nonprofit facility.*



Thank you  
Sharon, for  
an amazing  
21 years  
serving our  
community  
through the  
SACF!



On Thursday, September 30, 2021, Sharon Koszyk, the longtime Administrative Director for Schuylkill Area Community Foundation retired after just under 21 years of dedicated service.

During her tenure, Sharon worked in 3 different offices, managed the foundation records from paper ledger books to online software systems, and educated countless nonprofits about the grant application cycle.

Sharon also coached hundreds of students and parents through the SACF scholarship application cycle, and supported all of our donors, board members, and community members.

She began her career guided by one of the foundation's founding members, Harry Strouse. Sharon often would refer back to his guidance, even after his passing, to guide the future of the foundation.

## HERO FUNDS

### Wilfred C. La Voie Theatrical Fund

After he returned from service, Wilfred performed in several theatres in New York including the Driftwood Showboat, The Coach House Players, Mid-Hudson Rep Company, as well as in radio plays. In 1979, he moved to Los Angeles where he was a member of Actors' Equity Association, the Screen Actors Guild, and the American Federation of Television and Radio Artists. His credits from the Catskills to California encompassed sound stages and store windows, theaters, tents, and even a floating showboat. Los Angeles stage credits included premier performances of original work at The Court and Tiffany, as well as revivals of dramas, musicals, and comedies from "Guys & Dolls" to "You Can't Take it With You." On television, he appeared in episodic series ("LA Law," "Who's the Boss," "General Hospital"), and he did voiceovers ("Magnum, P.I.," "Quantum Leap") and commercials for Mercedes Benz and Bank of America.



Give Locally.

## Schuylkill • Gives

Help Locally.

# Schuylkill Gives raises \$65,303 for 39 Nonprofits in the County

In our second year of Schuylkill Gives, the 2021 campaign, which was held on Friday, May 14, 2021, received 981 donations from 696 donors. Schuylkill Gives is a 24 hour purely online giving day which benefits registered nonprofits who serve Schuylkill County. Nonprofit registration begins in February of each year, and resources are provided to the registered nonprofits to build their own landing page, social media graphics, and communications, to share the event with their constituents.

Prizes, in the form of additional donations to the organization, may be earned throughout the 24 hours.

### The sponsored 2021 prize recipients were:

#### ORWIGSBURG AREA FREE PUBLIC LIBRARY

The organization with the most unique donors throughout the entire day

##### 1st Grand Prize - \$500

Prize sponsored by  
Carnegie Investment Counsel



#### RINGTOWN AREA LIBRARY

The organization with the most unique donors by noon

##### 2nd Grand Prize - \$500

Prize sponsored by  
Skook Auto Sales



#### SCHUYLKILL COUNTY'S VISION

The organization with the most unique donors during Lunch Power Hour (noon to 1 pm)

##### 3rd Prize - \$125

Prize sponsored by  
Marshall, Bohorad, Thornburg,  
Price & Campion, P.C.

Organization	Amount	Donors
Orwigsburg Area Free Public Library	\$9,010.00	163
Ringtown Area Library	\$8,270.00	155
Walk In Art Center	\$6,630.00	17
Servants to All - My Father's House	\$4,425.00	46
Nativity BVM High School	\$3,425.00	30
Shenandoah Area Free Public Library	\$3,250.00	42
Hillside SPCA	\$2,875.00	43
Schuylkill County's VISION	\$2,715.00	52
Schuylkill Hope Center for Victims of Domestic Violence	\$2,335.00	16
Schuylkill County Conservancy	\$1,960.00	39
Mahanoy City Public Library	\$1,779.00	14
Schuylkill County Historical Society	\$1,313.63	24
Friends of the Schuylkill Area Community Foundation	\$1,240.00	47
CEBA	\$1,205.00	26
Schuylkill County Council for the Arts	\$1,150.00	20
Schuylkill YMCA	\$1,120.00	11
Northeast PA Manufacturers & Employers Council, Inc.	\$1,100.00	3
Greater Shenandoah Area Historical Society	\$1,000.00	18
St. Joseph Center for Special Learning	\$850.00	17
Schuylkill Free Shakespeare	\$815.00	21
ASSUMPTION BVM	\$775.00	18
Majestic Theater Association	\$765.00	23
Avenues Schuylkill County Therapeutic Riding Program	\$690.00	20
Our Haven Foundation	\$650.00	8
Helping Harvest Food Bank	\$555.00	7
Jewel Women's Center	\$505.00	7
Ashland Public Library	\$490.00	7
AHEDD	\$375.00	5
Pottsville Free Public Library	\$350.00	13
Anthracite Philharmonic	\$350.00	6
Gabriel Chamber Ensemble	\$200.00	2
Schuylkill Area Community Foundation	\$150.00	2
Pinegrove Historical Society - Stanhope Schoolhouse Project	\$150.00	3
Dustin's Adventureland	\$145.00	4
Open Arms Ministries	\$85.00	4
Minersville Area Historical Society	\$60.00	3
Valley View Park Association	\$55.00	3
Tamaqua Public Library	\$25.00	2
Clinical Outcomes Group, Inc.	\$25.00	2

## A HERO IS

The librarian who thought outside of the box to continue the summer reading program safely for all attendees.

# Grants, Scholarships and Awards

## Grant Recipients

Ashland Area Community Choir  
Ashland Area Girls Softball  
Ashland Borough Police Department  
Ashland Borough/Ashland Recreation  
Ashland Community Enterprises  
Ashland Public Library  
Big Impact Group of Schuylkill County  
Child Development, Inc.  
Citizens Fire Co#1  
Crossfire Youth Ministries  
Downtown Shenandoah, Inc.  
Frackville Free Public Library  
Friends of Gordon - FOG  
Girardville Borough Police  
Helping Harvest  
Mahanoy City Public Library  
Majestic Theater Association  
Minersville Public Library  
Nurse-Family Partnership of Schuylkill County  
Orwigsburg Area Free Public Library  
Orwigsburg Historical Society  
Pine Grove Community Church Student Ministry  
Pinegrove Historical Society - Stanhope School Project

## Scholarships and Graduation Awards

Alice E. Kear Music Scholarship Fund  
Andrew Neidlinger Memorial Fund  
Betsy Rubright Kent Memorial Fund  
Butler Township High School Alumni Scholarship Fund  
Carr-Willower Memorial Scholarship Fund  
Chester P. Steininger Memorial Fund (Medical)  
Craig R. Troutman Memorial Award Fund  
David Lee Sener Memorial Award  
David R. Schmaldienst Music Award Fund  
Dorothy and Edward Clevestine Lourdes Regional Catholic High School Scholarship Fund  
Dorothy and Edward Clevestine Scholarship Fund  
Dorothy Wewer Narcovich Scholarship Fund  
Dr. Robert Douglas Spencer Memorial Fund  
Dr. Rudolph A. Constien Scholarship Fund  
Edward H. Watkins Memorial Fund  
Elizabeth K. Frank Memorial Music Fund  
Emma T. Irwin Memorial Fund  
Ethel M. Jones Ermert, R.N., Memorial Award in Obstetrics  
FARM Youth Scholarship Fund  
Felker-Smith Memorial Fund

Marie M. Campbell Scholarship Fund  
Mark and Wanda Edelman Fund  
Mark R. Bell Memorial Award  
Martha M & Michael J Herbert M.D. Charitable Trust  
Mary E. and Warren E. Wert and Gertrude C. Shuler Memorial Fund  
Mary I. Kull Memorial Fund  
Maud M. Prichard Memorial Fund  
Mechanicsville Ladies Auxiliary Award Fund  
Paul M. Krukas Memorial Award Fund  
Pflugger-Przybylik Family Scholarship Fund  
Philadelphia General Hospital Blockley School of Nursing Fund  
Pottsville Catholic Alumni Fund  
Pottsville Lions Charities, Inc. Scholarship Fund  
Rae Ann Lubold Memorial Fund  
Ralph W. Morgan Memorial Scholarship Fund  
Raymond L. & Jean D. Tilmont Memorial  
Richard W. & Dolores D. Adams Memorial Scholarship Fund  
Robert C. Fetterolf Memorial  
Roy P. Steeley Music Scholarship Fund  
Ruth A. Wagner Memorial Fund  
Ryan Paul Stankavage Memorial Scholarship Fund  
Schuylkill County Medical Society Alliance Award Fund  
Sch. Haven Lions Comm. Char. Healthcare Scholar Fund  
Schuylkill Elder Abuse Prevention Alliance Scholarship Fund  
Schuylkill Headwaters Association Watershed Conservation Award Fund  
Shirley Manbeck Veterinary Scholarship Fund  
Spartan Wrestling Boosters and Coaches 2004-2012 Award Fund  
Stephen Fago Memorial Fund  
Susan B. Berezwick and Sgt. Keith T. Berezwick Memorial Education Fund  
T. Stuart Goynes Memorial Fund  
Tara M. Corson, Timothy R. Kimber & Joseph P. McGeoy Fund  
The Jack Travis Memorial Award  
The James J. and Mary Edith Rhoades Scholarship Fund  
Tim Stine Memorial Fund  
United Steel Workers of America, Local 14372, Scholarship Fund  
Warren & Marcella Stutzman Memorial Scholar Fund  
William J. "Rex" Roberts Memorial Fund  
William J. Jones, Jr. Memorial Award Fund  
Zarina Wahhab Nursing Scholarship Fund

## HERO FUNDS

### Jeffrey Donnelly Memorial Award Fund

The Mahanoy Area Education Association established the award to create the legacy of a son, husband, father, teacher and friend who passed away on September 18, 2011. Mr. Donnelly was a well-loved teacher at Mahanoy Area High School and the award will be given annually in his memory to graduating high school seniors who are planning to further their education. To be qualified students must be a Mahanoy Area athlete at the time of application and maintained a grade point average of 2.5 or greater during his/her high school career.



Port Carbon Public Library  
Pottsville Free Public Library  
Ringtown Area Library  
SARCC - Schuylkill County  
Schuylkill Ballet Theatre  
Schuylkill Choral Society, Inc.  
Schuylkill County's VISION  
Schuylkill Free Shakespeare  
Schuylkill Haven Free Public Library  
Servants To All  
Shape of Justice Inc  
Shenandoah Area Free Public Library  
Shriners Hospitals for Children  
St. Joseph Center for Special Learning  
Sweet Arrow Lake Conservation Association  
Tremont Community Organization  
Tri-Valley Free Public Library  
Washington Fire Co. Community Ambulance Assoc. Inc  
Washington Fire Company No 1

First Baptist Church of Ashland Fund  
Fred G. Smith Golden Rule Scholarship Award Fund  
Frederick T. Kull & Betty A. Kull Memorial Fund  
Frederick T. Kull & Betty A. Kull Scholar-Athlete Fund  
Hunter William Renninger Memorial Scholarship Fund  
Huntzinger-Schadel Family Scholarship Trust  
James D. Collins Memorial Scholarship Fund  
James R. Kruss Memorial Award Fund  
Jean A. Tielman, R.N., Memorial Fund  
Jeffrey Donnelly Memorial Award Fund  
John and Anna Breitigan Memorial Award Fund  
Joseph M. O'Neill, Jr. Memorial Fund  
Joyce M. Stankavage, R.N. Memorial Scholarship Fund  
Leonard Chaikowsky Academic Award  
Lewis M. and Frederic J. Koch Scholarship Fund  
Loretta Pollack Woznisky-Lonoskie Fund  
Mahanoy City Visiting Nurse Association Scholarship Fund  
Marian P. Brennan Scholarship Fund  
Marie Bossler Phi Delta Kappa Kutztown Chapter Scholarship Fund

# New Funds

## Leonard L Ludinsky Memorial Fund

This scholarship has been established in memory of Len who passed away on December 13, 2020. The Mahanoy Area School District was an important part of his life, where he began his career teaching in 1968 as a Business Teacher and then in 1973, Len became the school's first business manager. It was a responsibility he never took lightly. He wore many hats while performing a job he loved. Len not only did accounting, but he also supervised the transportation for the district. Len's career spanned 29 years. He retired from the district in 1997.



Len grew up in Buck Mountain. His passions included fishing, basketball, and playing cards. He graduated from Mahanoy Township High School in 1955. While attending Bloomsburg State College, Len met his future wife, Carol Whitebred. They shared 61 years together. While raising their two children in Mahanoy City, Len could often be found fishing at the local state parks or the Lehigh River. His love of the outdoors included yearly trips to Canada. He took great pride in teaching others and sharing his many experiences with neighbors and friends. Len also enjoyed the Phillies and rarely missed an opportunity to watch them. Len's greatest prides of joy were his two grandsons, Joshua and Zachary. He loved being a grandfather and shared his many stories and jokes with his boys.

This fund provides an annual graduation award to a Mahanoy Area School District graduating senior who has excelled in business subjects and plans to major in Accounting or Business Administration at a college or university.

## Schuylkill Intermediate Unit Pass Through Fund

Distributions from this fund shall be made periodically as directed by SIU29 to be used for the Playground Project. The playground and outdoor education trail will meet the various needs of Schuylkill County children students ages 3 through 21 that are attending the Maple Avenue Campus. There will be a variety of playground pieces that will allow all students to enjoy play and socialization. The equipment will be specialized with a focus on student mobility and sensory needs.

## The John and Ann Snyder Outdoor Fund

We will share more about these heroes in the 2022 Annual Report.

## Schuylkill County Conservancy Pass Through Fund

Distributions are made to the Schuylkill County Conservancy for such uses and purposes as determined by the organization.

## HERO FUNDS

### The Cepheus Memorial Award Fund

The support family and friends of Shimelis Cepheus established this scholarship to help keep the memory and dreams of that 'Diamond in the Rough' alive. He was better known to the people in his life here in Schuylkill County as 'Shimmy'. His life began in the country of Ethiopia where he lived until the age of nine. He spent his school years learning in the Pottsville and Schuylkill Haven Area School Districts. Shimmy loved the sport of soccer and enjoyed sharing that love with his friends and teammates. He participated in the Schuylkill County Youth Soccer Program for a number of years and then went on to play for the Schuylkill Haven Area High School and Penn State University, Schuylkill Campus.

## HERO FUNDS

### Tim Stine Memorial Fund

Tim Stine had a long and successful career at Minersville beginning in 1976 with the Pee Wees followed by Midgets, which were the 1979 Coal Bowl champs. He played on Minersville's Freshmen team, which was undefeated, and on the varsity squad for three years. In June 1984, Tim's outstanding athletic achievements earned him a spot on the first North-South Dream Game, which ended in a 0-0 tie. This fund provides an award to a member of the graduating class of Minersville Area High School who excels as a lineman on the football team.

# A HERO IS

*The teacher who devoted time to review, edit, and provide feedback on a student's post high school application essays.*

# Fund Composition

## DESIGNATED PURPOSE

### **Adeline Strouse Memorial Fund**

Distributions are used to maintain the Mothers Memorial in Ashland.

### **Ashland Area Historic Preservation Society Endowment Fund**

Distributions are made to the Ashland Area Historic Preservation Society for such uses and purposes as the organization shall determine.

### **Ashland Area Midget Football Association, Inc. Fund**

Distributions are made to the Ashland Area Midget Football Association, Inc.

### **Ashland Downtown, Inc. Fund**

Distributions are used for the upkeep, maintenance, and beautification of the Hoffman Boulevard Islands and the Hoffman Memorial in Ashland, PA.

### **Ashland Girl Scout Campership Fund**

Distributions are used to pay for the attendance of Ashland area Brownies, Junior Girl Scouts, Cadet Girl Scouts, and Senior Girl Scouts at camp.

### **Ashland Public Library Fund**

Distributions are made to the Ashland Public Library for the use by the library in defraying the expenses of its activities.

### **Ashland Tri-Centennial Fund**

Distributions are made to the Ashland Borough Council for the benefit of the citizens of Ashland and for the general purposes of the borough.

### **Beatrice Wasley Legacy Fund**

Distributions are made to the Sisters of St. Casimir located in Chicago, Illinois to be used for personal care needs of the Sisters who are retired.

### **Ben Franklin Trust**

Distributions are used to benefit the public libraries of Schuylkill and neighboring counties.

### **Bethany Children's Home Fund**

Distributions are made to Bethany Children's Home for such uses and purposes as the Bethany Children's Home shall determine.

### **Butch Kennedy Memorial Fund**

Distributions are made to the Anthracite Region Center for Independent Living - Disability Action Crew to provide direct financial assistance to individuals with an open case.

### **Carl F. Reichwein, M.D., Memorial Fund**

Distributions are made to St. Mauritius and St. Joseph's Roman Catholic Churches or the consolidated church (which is currently St. Charles Borromeo Catholic Church), Ashland to provide financial aid for children of the two parishes in obtaining education in Catholic elementary schools.

### **Chamber of Commerce Christmas Decoration Fund**

Distributions are made to the Ashland Chamber of Commerce for its use in providing the annual Ashland Christmas decorations.

### **Cornelius J. McFadden and Anna M. McFadden Memorial Trust Fund**

Distributions are made to St. Joseph's Catholic Church and St. Mauritius Catholic Church, Ashland or its successor (which is currently St. Charles Borromeo Catholic Church), Ashland Public Library, Washington Fire Company Community Ambulance, and to projects as selected by the Directors.

### **David W. McClafferty Memorial Fund**

Distributions are made to Hillside Society for the Prevention of Cruelty to Animals for such uses and purposes as the organization shall determine.

### **Davis / Boehmer Family Fund**

Distributions are made to Emmanuel Church of Christ, Nuremberg-Weston Fire Company, Nuremberg Community Ambulance Association, and Twin County Lions Club Foundation.

### **Elizabeth Keiser Moser RN Memorial Fund**

Distributions are made to Saint Patrick's Roman Catholic Church in Pottsville to specifically support youth activities within the Parish and four (4) masses per year.

### **Elmer W. Toewe Memorial Fund**

Distributions are made to Ashland Little League Baseball, Inc.

### **Eureka Park Fund**

Distributions are used for repairs and maintenance of Eureka Park, Ashland.

### **Faith and Friends Walking Hand in Hand Fund**

Distributions are made to Faith and Friends Walking Hand in Hand for such uses and purposes as determined by the organization.

### **Foundation for Agriculture and Resource Management Shadle Nature Center/Weston Fund**

Distributions are made to the Foundation for Agriculture and Resource Management for the Dr. James S. Shadle Nature Center and Bear Creek Environmental Area.

### **Frackville Free Public Library Fund**

Distributions are made to Frackville Free Public Library for such uses and purposes as determined by the Library.

### **Fred J. Wiest and Elizabeth S. Wiest Memorial Fund**

Distributions are used to support The Charles Baber Cemetery Preservation Trust of Pottsville, PA for the maintenance, repair, and improvement of the Charles Baber Cemetery.

### **Gabriel Chamber Ensemble Endowment Fund**

Distributions are made to the Gabriel Chamber Ensemble for such uses and purposes as determined by the organization.

### **George J. and Catherine Schilling Memorial Fund**

Distributions are made to the Washington Fire Company No. 1 in Ashland.

### **Higher-Ups Park Fund**

Distributions are used for maintenance of Higher-Ups Park, Ashland.

### **Human Services Fund**

Distributions are made to organizations or activities which promote or engage in programs or activities which improve and enhance the quality of life in Schuylkill County as recommended by the Schuylkill County Department of Human Services.

### **Johnson-Beckno (Pecho) Memorial Fund**

Distributions are made to the Society for Crippled Children of Schuylkill County, Schuylkill Hope Center, and Sexual Assault Resource and Counseling Center of Schuylkill County.

### **Joseette and Bert Evans Kimmels Evangelical Free Church Cemetery Fund**

Distributions are made to the Kimmels Evangelical Free Church for maintenance, repair and improvement of the Kimmels Evangelical Free Church Cemetery, Orwigsburg, PA.

### **Joseette and Bert Evans Schuylkill Haven Union Cemetery Mausoleum Fund**

Distributions are made to the Schuylkill Haven Union Cemetery for maintenance, repair and improvement of the Mausoleum.

### **Lasting Legacy For Pottsville Fund**

Distributions are made to Lasting Legacy For Pottsville for such uses and purposes as determined by the organization.

### **Melba S. Royal and Robert A. Royal Fund**

Distributions are made to the United Presbyterian Church of Pottsville, Pottsville Free Public Library, Schuylkill County Council for the Arts, Trinity Episcopal Church for the upkeep of Charles Baber Cemetery, and the City of Pottsville Shade Tree Commission.

### **Minersville Area High School Student Educational Fund**

Distributions are used specifically to support Minersville Area High School students considered "at risk" during his/her high school years.

### **Mothers Memorial Fund**

Distributions are used to maintain the Ashland Mothers Memorial and the site.

### **North Schuylkill Team of Volunteer Home Care Fund**

Distributions are made to Washington Fire Company Community Ambulance.

### **Patricia Freeh-Stefanek Tamaqua Area Community Partnership Endowment Fund**

Distributions are made to Tamaqua Area Community Partnership for such uses and purposes as determined by the organization.

### **Pennsylvania Association for the Blind Endowment Fund**

Distributions are made to the Pennsylvania Association for the Blind to support the mission of the organization.

### **Pottsville Enrichment Fund**

Distributions are made to the Charles Baber Cemetery for improvements and functions which will benefit the citizens of Pottsville.

### **Pottsville Lions Charities, Inc. Endowment Fund**

Distributions are made to Pottsville Lions Charities, Inc. for such uses and purposes as determined by the organization.

### **Reidler Family Library Trust**

Distributions are made to the Ashland Public Library.

### **Richard and Mildred Sharp Memorial Fund**

Distributions are made to the First United Methodist Church of Shamokin, the Shamokin High School Alumni Association, and the Shamokin/Coal Township Public Library.

### **Richard W. and Dolores D. Adams Pine Grove Community Memorial Fund**

Distributions are made to the Pine Grove Ambulance Association (EMS) and the Pine Grove Hose, Hook, and Ladder Company.

### **Ringtown Area Library Fund**

Distributions are made to the Ringtown Area Library for such uses and purposes as determined by the Library.

### **Schuylkill Choral Society Fund**

Distributions shall be given annually to the Schuylkill Choral Society for its general uses and purposes.

### **Schuylkill Conservation District Endowment Fund**

Distributions are made to the Schuylkill Conservation District for such uses and purposes as determined by the organization.

### **Schuylkill County Conservancy Fund**

Distributions shall be given annually to the Schuylkill County Conservancy for its general uses and purposes.

### **Schuylkill County Conservation and Environmental Improvement Endowment Fund**

Distributions are made to the Schuylkill County Commissioners to be expended in conformance with the Environmental Stewardship and Watershed Protection Act of 1999.

### **Schuylkill County Historical Society Endowment Fund**

Distributions are made to Schuylkill County Historical Society for such uses and purposes as the organization determines.

### **Schuylkill County Society For Crippled Children McAdams Endowment Fund**

Distributions are made to Schuylkill County Society for Crippled Children for such uses and purposes as determined by the organization.

### **Schuylkill Haven Free Public Library Fund**

Distributions are made to Schuylkill Haven Free Public Library for such uses and purposes as determined by the Library.

### **Schuylkill Haven Lions EMS Fund**

Distributions are made to the Schuylkill Haven Area EMS for such uses and purposes as determined by the organization.

### **Schuylkill Headwaters Association Fund**

Distributions are made to the Schuylkill Headwaters Association for such uses and purposes as determined by the organization.

### **Schuylkill United Way Endowment Fund**

Distributions are made to Schuylkill United Way for such uses and purposes as determined by the organization.

### **Schuylkill Women In Crisis Endowment Fund**

Distributions are made to Schuylkill Hope Center, formerly known as Schuylkill Women In Crisis (SWIC) for such uses and purposes as the organization determines.

# A HERO IS

*The student who learned about inclusion and then diffused a situation at their high school.*



#### **St. Paul's Historic Cemetery Endowment Fund**

Distributions are made to St. Paul's Lutheran Church in Port Carbon for the sole purpose of maintenance, repair and improvement of the St. Paul's Historic Cemetery located in Port Carbon, Pennsylvania.

#### **The Schuylkill Intermediate Unit Fund**

Distributions are made to Schuylkill Intermediate Unit 29 ("SIU") to fund projects and activities that support students enrolled in SIU programs and/or receiving SIU services.

#### **The Schuylkill Technology Center (STC) Fund**

Distributions are made to Schuylkill Technology Center to provide enhanced resources to improve technology and communications, specialized software, equipment and services for vocational education, additional training and capacity building with local business and industry.

#### **Tyler Sincavage Memorial Fund**

Distributions are made to the Schuylkill Intermediate Unit #29 or its successor to support students with Low Incidence needs, as defined by the Schuylkill Intermediate Unit #29 Board of Directors, within the Multiple Disabilities, Life Skills and Autistic Support programs.

#### **Walk In Art Center Endowment Fund**

Distributions are made to the Walk In Art Center (WIAC) for such uses and purposes as approved by the WIAC's Board of Directors.

#### **Washington Fire Company Community Ambulance Fund**

Distributions are made to the Ashland Washington Fire Company Community Ambulance for its use in providing ambulance service to the area.

#### **Wilfred C. La Voie Theatrical Fund**

Distributions are made to Coach House Players Inc. for the organization's scholarship program.

#### **Willow Park Fund**

Distributions are used for repairs and maintenance of Willow Park, Ashland.

### **DONOR ADVISED**

#### **Ashland Rotary Club Charity Fund**

The Ashland Rotary Club Charitable Trust recommends grants to charitable organizations.

#### **Carlyon Charitable Trust Fund**

The donor recommends grants to charitable organizations.

#### **Friends of the St. Vincent DePaul Societies of Upper Schuylkill County Fund**

The donor recommends grants to charitable organizations in Schuylkill County for the benefit of residents in the areas of Ashland, Frackville, Girardville, Gordon, Mahanoy City and Shenandoah.

#### **John C. & Helen M. Schreck Memorial Fund**

The donor recommends grants to charitable organizations.

#### **Joseph A. Zane, Esq. Family Charitable Endowment Fund**

The donor recommends grants to charitable organizations such as libraries and recreational resources in the Shenandoah and Schuylkill Haven areas.

#### **Mabel and Harry Strouse Memorial Fund**

The donor recommends grants to charitable organizations.

#### **Reidler Family Charitable Fund**

The donor recommends grants to charitable organizations.

#### **Reidler Family Helping Hand Fund**

The donor recommends grants to charitable organizations.

### **FIELD OF INTEREST**

#### **Arnold Delin Education Fund**

The fund will support educational related projects or programs, including but not limited to the Youth Conferences, Arnold Delin Awards Program, and trips to the Holocaust Museum for area high schools.

#### **Ashland Area Scouting Fund**

Distributions are used to provide both male and female scouts with equipment and help pay their expenses.

#### **Ashland Mutual Fire Ins Co Fire & Safety Fund**

Distributions are used to purchase equipment and supplies for fire fighting, fire prevention, or first aid, and for the attendance of firemen of Ashland at any firefighting or prevention schools.

### **Tyler Sincavage Memorial Fund**

Tyler attended the Schuylkill IU #29 since pre-school. The teachers, therapists and children grew to love Tyler's smiling personality. His classmates showed us the pureness of a child's heart just treating him like any other child. We want to keep his smile alive in hoping to put a smile on someone else's face. All Tyler ever wanted was attention just a simple hello or smile would brighten his day. Although he could never walk or talk we all saw the love in his eyes and his smile. We were lucky to have our Tyler 8 years, 8 months and 21 days.

## **HERO FUNDS**



#### **Ashland Volunteer Fire Department, Washington Fire Company No. 1 and American Fire Company No. 1 Trust**

Distributions are made to the fire companies to assist them in obtaining and maintaining their fire fighting equipment.

#### **Charles Werner Endowment Fund**

Distributions are made to organizations, churches, or public agencies' programs benefitting and educating children residing in Pine Grove Borough, Pine Grove Township, and Washington Township.

#### **Dr. Gail D. Mackey, VMD, DABVP Animal Fund**

Distributions are made to individuals, organizations, and/or municipalities to foster the bond between animals and humans so as to improve the quality of life.

#### **Fenstermacher/Hadesty's Legacy Fund**

Distributions are used for the health and human services sector.

#### **Isabelle Ross Mettam Performing Arts Fund**

Distributions are used to promote and sponsor any activity associated with the performing arts, such as music, dance, theater, and all the variations thereof.

#### **Marian E. Fenstermacher Memorial Fund**

Distributions are made at the discretion of the Community Foundation's Board of Directors.

#### **The Diversity Fund for Schuylkill County**

Distributions are used for diversity educational programs and projects for the general population of Schuylkill County.

#### **The John and Ann Snyder Outdoor Fund**

Distributions are made to qualifying organizations which conduct, or will conduct, programs or activities in the County.

#### **The Nature Fund**

Distributions are made to individuals, organizations, and/or municipalities engaged in protecting, preserving, and rehabilitating the environment and natural resources.

#### **The Pediatric Autism Services Fund**

Distributions shall be used to assist eligible persons with paying their out of pocket costs for the delivery of therapies for autism.

### **GENERAL UNRESTRICTED**

#### **Eleanor B. Spencer Memorial Fund**

Distributions are used to maintain, promote, and improve the welfare, health, education, employment, happiness, safety, and security of the citizens of the Ashland area.

#### **Elwood T. Bracey Fund**

Distributions are used for any educational, charitable, scientific, or literary uses, and other purposes of a similar nature.

#### **Frank J. Pepper & Thomas J. Pepper Memorial Fund**

Distributions are used to maintain, promote, and improve the welfare, health, education, employment, safety, and security of the citizens of the Ashland area.

#### **Fred V. Knecht Memorial Fund**

Distributions are made to qualified organizations, projects or programs principally serving one or more of the geographic areas which encompass the Blue Mountain School District, Schuylkill Haven Area School District, Pine Grove Area School District or Williams Valley School District.

#### **Friends of the Foundation Fund**

Distributions are used for educational, charitable, scientific, or literary uses and purposes to qualified organizations.

#### **Laubenstein Memorial Fund**

Distributions are used to maintain, promote, and improve the welfare, health, education, employment, safety, and security of the citizens of Ashland.

#### **Lauer Community Fund**

Distributions are used to maintain, promote, and improve the welfare, health, education, employment, safety, and security of the citizens of Ashland.

#### **The Citizens' National Bank of Ashland Community Fund**

Distributions are used to maintain, promote, and improve the welfare, health, education, employment, happiness, safety, and security of the citizens of the Ashland area.

### **GRADUATION AWARD**

#### **The Eleanor Wasley Chaikowsky Academic Award Fund**

Provides an award to a female member of the graduating class of Shenandoah Valley High School who has a strong aptitude and interest in science, technology, engineering, or mathematics (STEM) and plans to further her education in this field.

#### **Andrew Neidlinger Memorial Fund**

Provides an award to a member of the graduating class of Mahanoy Area High School who plans to enter a medically-oriented post-secondary program.

#### **Betsy Rubright Kent Memorial Fund**

Provides an award to a member of the graduating class of North Schuylkill High School who excels in home economics.

#### **Craig R. Troutman Memorial Award Fund**

Provides an award to graduating seniors of Pottsville Area High School and of Nativity B.V.M. High School who are planning to pursue a degree in Secondary Education and who meet the criteria established by the donor.

#### **David Lee Sener Memorial Award**

Provides an award to a member of the graduating class at North Schuylkill High School who is the outstanding member of the brass section of the high school band.

#### **David R. Schmaldienst Music Award Fund**

Provides an award to a graduating senior of Tri-Valley High School pursuing post-secondary education and majoring in Music or related field.

#### **Edward H. Watkins Memorial Fund**

Provides an award to a member of the graduating class of North Schuylkill High School who has excelled in swimming.

#### **Emma T. Irwin Memorial Fund**

Provides an award to a member of the graduating class of the North Schuylkill High School who excels in art.

#### **Ethel M. Jones Ermert, R.N., Memorial Award in Obstetrics**

Provides an award to a member of the graduating class of Joseph F. McCloskey School of Nursing who has the highest mark in Obstetrics.

#### **Felker-Smith Memorial Fund**

Provides an award to a member of the graduating class of North Schuylkill High School, who demonstrates superior academic effort over his/her high school career.

#### **First Baptist Church of Ashland Fund**

Distributions are made to the Ashland Public Library, Baptist Children's Services, Washington Fire Company #1, American Hose Company, Schuylkill Women in Crisis, and to a member of the graduating class of North Schuylkill High School.

#### **James R. Kruss Memorial Award Fund**

Provides an award to graduating high school seniors of Pottsville Area High School who are enrolled in the Carpentry Program at Schuylkill Technology Center.

#### **Jean A. Tielman, R.N., Memorial Fund**

Provides an award to a member of the graduating class of Nativity B.V.M. High School who is pursuing training leading to an R.N. diploma or a B.S.N. degree.

# Fund Composition

## Jeffrey Donnelly Memorial Award Fund

Provides an award to a member of the graduating class of Mahanoy Area High School who is an athlete at the time of graduation and plans to further his/her education.

## John and Anna Breitigan Memorial Award Fund

Provides awards to students who are Schuylkill County residents enrolled at The Joseph F. McCloskey School of Nursing.

## Jonathan "Feet" Palubinsky Memorial Award

Provides an award to a member of the graduating class of Mahanoy Area High School who has demonstrated the most "Bear Pride" throughout their high school career.

## Joseph M. O'Neill, Jr. Memorial Fund

Provides an award to a graduating senior whose course of study was Electromechanical/Industrial Automation and Robotics at the Schuylkill Technology Center.

## Leonard Chalkowsky Academic Award

Provides an award to a member of the graduating class of Shenandoah Valley High School who plans to pursue educational study.

## Leonard L. Ludinsky Memorial Fund

Provides an annual graduation award to a Mahanoy Area School District graduating senior who has excelled in business subjects and plans to major in Accounting or Business Administration at a college or university.

## Leslie E. Harner Instrumental Music Memorial Fund

Provides awards to graduating seniors who are members of the Tremont Fire Company Community Band.

## Loretta Pollack Woznisky-Lonoskie Fund

Provides an award to a member of the graduating class of Pottsville Area High School who has demonstrated concern and dedication to preserving the environment and sustaining our green spaces.

## Mark and Wanda Edelman Fund

Provides an award to a female member of the graduating class of North Schuylkill High School who plans to attend Bloomsburg University and major in secondary education.

## Mark R. Bell Memorial Award

Provides an award to a member of the graduating class of North Schuylkill High School who is going to pursue a Bachelor of Science Degree in Elementary Education.

## Mary E. and Warren E. Wert and Gertrude C. Shuler Memorial Fund

Provides an award to a member of the graduating class of the Millersburg Area High School who is going to pursue a degree in Elementary or Secondary Education.

## Rae Ann Lubold Memorial Fund

Provides an award to the person in the Joseph F. McCloskey School of Nursing who is the Valedictorian of that class.

## Robert C. Fetterolf Memorial

Provides an award to a member of the graduating class of North Schuylkill High School who is pursuing training leading to an R.N. diploma or a B.S.N. degree.

## Ruth A. Wagner Memorial Fund

Provides an award to a member of the graduating class of North Schuylkill High School, who is a resident of Butler Township, and who excels in physical education.

## Sch. County Medical Society Alliance Award Fund

Provides awards to various students throughout Schuylkill County who are pursuing a nursing career or who are majoring in the allied health career field.

## Schuylkill Headwaters Association Watershed Conservation Award Fund

Provides an award to a graduating senior of any of the school districts located within the Schuylkill River Watershed who demonstrates a commitment to the community by participating in environmental or conservation projects and/or programs outside the classroom, and has earned a high school G.P.A. of 3.0 or greater.

## Spartan Wrestling Boosters & Coaches 2004-2012 Award Fund

Provides an award to a graduating high school senior of North Schuylkill High School who wrestled Varsity in the high school's wrestling program for three years of his/her high school career and who meets the criteria established by the committee.

## Stephen Fago Memorial Fund

Provides an award to a member of the graduating class of North Schuylkill High School who specialized in math or science, and an award to a student of the North Schuylkill Technical Center for his/her outstanding record.

## Susan B. Berezwick and Sgt. Keith T. Berezwick Memorial Education Fund

This fund will provide an educational award to a member of the graduating class of Mahanoy Area High School.

## T. Stuart Goynne Memorial Fund

Provides an award to a member of the graduating class of North Schuylkill High School who has the second best record for excellence in mathematics.

## Tara M. Corson, Timothy R. Kimber & Joseph P. McGeoy Fund

Provides an award to a member of the graduating class of Pottsville Area School District who achieved a superior scholastic record and who participated extensively in some form of athletics.

## SCHOLARSHIP

### Alice E. Kear Music Scholarship Fund

Provides scholarships to a member of the graduating class of Minersville Area High School and Pottsville Area High School who will major in the study of music.

### Billie Payne Scholarship Fund

Provides scholarships to the Schuylkill County high school senior who was crowned the Greater Pottsville Winter Carnival Snowflake Princess.

### Blaze Belfiore Memorial Scholarship Fund

This fund provides scholarships for students attending St. Joseph Center for Special Learning in Pottsville.

### Butler Township High School Alumni Scholarship Fund

Provides scholarships to graduates of North Schuylkill High School who are residents of Butler Township.

### Carr-Willower Memorial Scholarship Fund

Provides scholarships to graduates of North Schuylkill High School, Cardinal Brennan High School graduates, and graduates of any Catholic high school who reside in the geographic areas served by the school districts of Mahanoy Area, North Schuylkill, and Shenandoah Valley who will major in the field of Education.

### Chester P. Steining Memorial Fund (Accounting)

Provides scholarships to graduates of Nativity BVM High School who are attending or about to attend a college or university located in the United States and pursuing a four (4) year college degree in Accounting.

### Chester P. Steining Memorial Fund (Medical)

Provides scholarships to a graduate of any Schuylkill County High School who is studying Oncology in medical school.

### Dorothy and Edward Clevestine Lourdes Regional Catholic High School Scholarship Fund

Distributions are made to Lourdes Regional Catholic High School students who are residents of the borough of Mount Carmel.

### Dorothy and Edward Clevestine Scholarship Fund

Provides scholarships to members of the graduating class of Mount Carmel Area High School to attend a college/university where he/she will pursue a baccalaureate degree.

### Dorothy Wewer Narcovich Scholarship Fund

Provides scholarships to students who are members of St. Mauritius Roman Catholic Church or St. Joseph's Roman Catholic Church, Ashland or its successor (which is currently St. Charles Borromeo Catholic Church) and who will be attending any Catholic high school in Schuylkill County or the surrounding area.

### Dr. Robert Douglas Spencer Memorial Fund

Provides scholarships to graduates of North Schuylkill High School, Cardinal Brennan High School graduates, and graduates of any Catholic High School who reside in the geographic areas served by the school districts of Mahanoy Area, North Schuylkill, and Shenandoah Valley.

### Dr. Rudolph A. Constien Scholarship Fund

Provides scholarships to residents of the Borough of Ashland.

### Elizabeth K. Frank Memorial Music Fund

Provides scholarships to a graduating senior of the Pine Grove Area High School who plans to pursue musical study and training at either an accredited college or university or an accredited music school.

### FARM Youth Scholarship Fund

Provides scholarships to high school graduates for post-secondary education. Students must have shown an animal at the Schuylkill County Fair as a member of the Schuylkill County 4-H Club or Schuylkill County FFA Chapter.

### Francis J. Towey, Jr. Memorial Scholarship Fund

Provides a scholarship to graduating seniors of North Schuylkill High School with preference given to students who will attend Bloomsburg University and major in the Sciences.

### Fred G. Smith Golden Rule Scholarship Award Fund

The Golden Rule Fund was established by Mr. Fred G. Smith to financially assist students who plan to acquire a college education at Bloomsburg University and Trade Schools.

## HERO FUNDS

### Schuylkill County Historical Society Endowment Fund

For over 110 years, the Schuylkill County Historical Society has been preserving the county's history, promoting the story of our rich and diverse heritage and the hard-working men and women who helped fuel America's Industrial Revolution. With SACF's support, the Society will continue to offer inspirational programs and exhibits for generations to come. Distributions from this fund are made to Schuylkill County Historical Society for such uses and purposes as the organization determines.

## Maud M. Prichard Memorial Fund

Provides an award to a member of the graduating class of North Schuylkill High School who excels in mathematics.

## Mechanicsville Ladies Auxiliary Award Fund

Provides an award to two members of the graduating class of Pottsville Area High School who have resided in the Borough of Mechanicsville during all four years of his/her high school career and has the highest GPA at the end of the senior year.

## Paul M. Krukas Memorial Award Fund

Provides an award to graduating high school seniors of Mahanoy Area High School who actively participated in the high school's football program and/or golf program for at least two years, plans to enlist in the United States Navy or attend an institution of higher education.

## Pottsville Catholic Alumni Fund

Provides an award to students entering their freshman year at Nativity B.V.M. High School.

## The Jack Travis Memorial Award

Provides an award to a graduating high school senior of North Schuylkill High School who has excelled in History throughout his or her high school career.

## Tim Stine Memorial Fund

Provides an award to a member of the graduating class of Minersville Area High School who excels as a lineman on the football team.

## William J. "Rex" Roberts Memorial Fund

Provides an award to a member of the graduating class of the North Schuylkill High School who excels in English.

## William J. Jones, Jr. Memorial Award Fund

Provides an award to graduating seniors of Mahanoy Area High School who during the school career has exhibited a commitment to activities within school or outside in the community and plans to attend an institution of higher education or military service.

## HERO FUNDS



### **Frederick T. Kull & Betty A. Kull Memorial Fund**

Provides scholarships to graduates of North Schuylkill High School who in college are majoring in mathematics or biological or physical sciences.

### **Frederick T. Kull & Betty A. Kull Scholar-Athlete Fund**

Provides scholarships to graduates of North Schuylkill High School who in high school achieved a superior scholastic record and who participated extensively in some form of athletics including cheerleading.

### **Hunter William Renninger Memorial Scholarship Fund**

Provides scholarships to graduating seniors of Minersville Area High School and Blue Mountain High School, who demonstrated a profound respect for their school and local communities.

### **Huntzinger-Schadel Family Scholarship Trust**

Provides scholarships to students of the graduating class of Tri-Valley High School.

### **James D. Collins Memorial Scholarship Fund**

Provides scholarships to students of the graduating class of the Mahanoy Area School District and the Tamaqua Area School District.

### **John Rich Curran Memorial Scholarship Fund**

Provides scholarships to qualifying graduates of Schuylkill County's public, private, and parochial high schools who meet established criteria.

### **Joyce M. Stankavage, R.N. Memorial Scholarship Fund**

Provides scholarships to graduates of Shenandoah Valley High School enrolled in the nursing program at the Joseph F. McCloskey School of Nursing.

### **Lavelle AMVETS Post #156 Scholarship Fund**

Provides scholarships to students who are graduating seniors or graduates of North Schuylkill High School, who will be attending or are attending an institution of higher education and, has a parent or spouse who is serving in the armed forces on active duty at the time of his or her application.

### **Lewis M. and Frederic J. Koch Scholarship Fund**

Provides scholarships to graduating seniors of the Schuylkill Haven Area High School who has overcome personal or academic adversity, exhibits leadership skills, and demonstrates good moral character.

### **Mahanoy City Visiting Nurse Association Scholarship Fund**

Provides scholarships to graduating high school seniors of Mahanoy Area High School to attend an accredited institution of higher education in the medical field.

### **Marian P. Brennan Scholarship Fund**

Provides a scholarship to a graduating senior of Tri-Valley High School who will attend an accredited institution of higher learning and major in Education with preference given to an Elementary Education major.

### **Marie Bossler Phi Delta Kappa Kutztown Chapter Scholarship Fund**

Provides scholarships to graduating seniors of any Schuylkill County and Berks County high schools who are pursuing post-secondary education and majoring in Education.

### **Marie M. Campbell Scholarship Fund**

Distributions are made to Nativity B.V.M. High School and Marian High School to defray the tuition of students attending the Catholic high schools.

### **Martha M. & Michael J. Herbert M.D. Charitable Trust**

Distributions are made to the Minersville Public Library, St. Nicholas Ukrainian Catholic School, Minersville Area School District, and provides scholarships to graduates of Minersville Area High School and Nativity B.V.M. High School.

### **Mary I. Kull Memorial Fund**

Provides scholarships to residents of the Borough of Ashland to further their education for a nursing career or enrolled in a training program for a career to care for persons who have a condition that markedly restricts one's ability to function physically, mentally or socially.

### **Pfluger-Przybylik Family Scholarship Fund**

Provides scholarships to a graduating senior of the Shenandoah Valley High School to major in a technical field such as accounting, computer technology, business, or engineering.

### **John and Anna Breitigan Memorial Award Fund**

John and Anna met in 1942 in St. Clair, PA. John was a native of North Braddock, PA and was stationed at Indiantown Gap. Anna was living in St. Clair. She arrived in the United States from Czechoslovakia when she was six years old. They corresponded during World War II and married in 1945 at Holy Trinity Church in St. Clair. During their 63 years of marriage the resided in Pottsville and raised a family of seven children. Jennie Breitigan established this fund as a lasting tribute to her beloved parents. "They remain two of the most important people in my life and the best examples of the kind of person I want to be. I am so proud to be their daughter," Jennie explained.

### **Philadelphia General Hospital Blockley School of Nursing Fund**

Provides scholarships to Schuylkill County students who are graduating or have already graduated and will major or are majoring in the nursing field and demonstrates financial need.

### **Pottsville Lions Charities, Inc. Scholarship Fund**

Provides scholarships to high school graduates who reside in the Pottsville Area School District who are pursuing further education in either the field of health care or automotive industry.

### **Ralph W. Morgan Memorial Scholarship Fund**

Provides a scholarship to a high school graduate from a Schuylkill County secondary school who completed a program of study at the Schuylkill Technology Center and plans to pursue a technical career.

### **Raymond L. & Jean D. Tilmont Memorial**

Provides scholarships to a member of St. Mauritius Roman Catholic parish or St. Joseph Roman Catholic parish, Ashland or its successor (which is currently St. Charles Borromeo Catholic Church) who will be attending any Catholic High School in Schuylkill County.

### **Richard W. & Dolores D. Adams Mem. Scholar. Fund**

Provides scholarships to students of the graduating class of Pine Grove Area High School based on financial need.

### **Roy P. Steele Music Scholarship Fund**

Provides an award to the most deserving graduate of the North Schuylkill High School Band.

### **Ryan Paul Stankavage Memorial Scholarship Fund**

Provides scholarships to graduating seniors of Shenandoah Valley High School who have participated in the sport of soccer.

### **Sch. Haven Lions Comm.Char.Healthcare Scholar Fund**

Provides scholarships to students who are employees or volunteers of the Schuylkill Haven Area EMS or graduates of the Schuylkill Haven Area School District or the Blue Mountain School District to attend institutions of higher education majoring in healthcare related fields.

### **Schuylkill Elder Abuse Prevention Alliance Scholarship Fund**

Provides scholarships to one or more individuals who are enrolled in a post-secondary educational program, course, or course of study which focuses on the physical, psychological or financial protection and wellbeing of the elderly.

### **Shirley Manbeck Veterinary Scholarship Fund**

Provides scholarships to Schuylkill County students who graduate from college and have been accepted by a Veterinary School of Medicine with preference given to those residents who graduated from either Tamaqua Area, Pine Grove Area, or Schuylkill Haven Area High Schools.

### **Stephen and John Kocis Scholarship Fund**

Provides scholarships to members of the graduating class of Mount Carmel Area High School to attend a trade, technical, or business school.

### **The Andrew and Lauretta Olinick Memorial Scholarship Fund**

Provides a scholarship to a graduate of Williams Valley School District who plans to earn a degree in a STEM related career, trade school study or technical school study.

### **The Cepheus Memorial Award Fund**

Provides a scholarship to graduating high school seniors of Schuylkill Haven High School and/or Pottsville Area High School, who plan on attending an institution of higher education.

### **The Genevieve Heisler Eubanks Memorial Nursing Scholarship**

Provides scholarships to graduating seniors of Schuylkill Haven High School who will continue their education in nursing.

### **The James J. and Mary Edith Rhoades Scholarship Fund**

Provides annual scholarships to qualified Schuylkill County high school seniors planning to further their education. Students must exhibit a commitment to education, citizenship, and community.

### **The Philip and Josephine Rosenkrantz Scholarship Fund**

Provides a scholarship to a Schuylkill Haven Area School District graduating senior who plans to major in business at a college or university.

### **United Steel Workers of America, Local 14372, Scholarship Fund**

Provides scholarships to children, stepchildren, adopted children, grandchildren, stepgrandchildren, and adopted grandchildren of the present members.

### **Warren & Marcella Stutzman Memorial Scholar Fund**

Provides scholarships to students of the graduating class of Tri-Valley High School based upon athletic achievements.

### **Zarina Wahhab Nursing Scholarship Fund**

Distributions shall be in the form of one or more annual scholarships to students enrolled, or enrolling, in the registered nursing program at the Joseph F. McCloskey School of Nursing, Pottsville, Pennsylvania.

## SPECIAL PROJECT

### **Circles of Giving**

#### **Lasting Legacy For Pottsville Pass Through - Agency Fund**

Distributions are made to Lasting Legacy For Pottsville for such uses and purposes as determined by the organization.

#### **Lasting Legacy For Pottsville Pass Through Fund**

Distributions are made to Lasting Legacy For Pottsville for such uses and purposes as determined by the organization.

#### **Nuremberg Community Ambulance Association Fund**

This fund is a temporarily restricted fund for the purposes of providing grants to volunteer ambulance service providers which provide ambulance service to the areas previously served by the Nuremberg Community Ambulance Association.

#### **Schuylkill County Conservancy Pass Through Fund**

Distributions are made to the Schuylkill County Conservancy for such uses and purposes as determined by the organization.

#### **Schuylkill Headwaters Association Pass Through Fund**

Distributions are made to the Schuylkill Headwaters Assn. for such uses and purposes as determined by the organization.

#### **Schuylkill Headwaters Association Pass Through Fund- Agency**

Distributions are made to the Schuylkill Headwaters Association for such uses and purposes as determined by the organization.

#### **Schuylkill Intermediate Unit Pass Through Fund**

Distributions shall be made periodically as directed by SIU29 to be used for the Playground Project.

#### **Schuylkill Technology Center Pass Through Fund**

Distributions shall be made periodically as directed by STC to be used for the Food Truck Project.

# A HERO IS

*The nonprofit volunteer who listened to a client, and helped them connect to needed services.*

# Philanthropists

## Arnold Delin Education Fund

Arianna Delin  
Benjamin Delin  
Carol Field  
Faust Capobianco  
Heckman & Laudeman, LLC  
Noah Delin  
Peggy Moser  
Richard Weiss  
Rick Chamberlin  
Schuylkill Intermediate Unit 29  
Sonny Fenstermacher  
Steven Field  
Synthomer Foundation  
The Merck Foundation

*In honor of Steve and Marjorie Cotler*

Allan Yudacufski  
Elliott Harris, P.A.

*In memory of Rose Rodano*  
Robynn Hope Delin

*In memory of Arnold Delin*  
Anonymous

Arianna Delin  
Barbara Lafko  
Barry and Selma Abeshaus  
Benjamin Delin  
Bill Degoff  
Carl E. Johnson, M.D., EdM., MSC  
Cecilia Michalik  
Denis and Marilyn Bane  
Dolores Delin

Dr. and Mrs. Gerald Ravitz  
Dr. Larry and Lorraine Palko  
Dwight Riemann

Ellen Forman Hof  
Ian and Lois Lipton  
James and Gina Bohorad  
Joyce Clem  
Kathleen Zwiebel  
Kenneth and Jeanne Porter  
M. Joseph Brady  
Marcia Ryon  
Marlin and Ann Marie Koch, Jr.  
Marria O'Malley Walsh  
Mary Emma Dean  
Noah Delin  
Patricia Dauksis  
Richard Weiss  
Rick Chamberlain

Trevor Burgess  
Victor and Dena Hammel  
*In memory of Arnold Delin and in Honor of Dolores Delin*  
F. Dale Schoeneman  
*In honor of Dolores Delin*  
Bryn Mawr Trust Company  
*In memory of Edna and Sam Abeshaus*  
Alan and Sandra Abeshaus

*In honor of Gerry Ravitz*  
"Special" Birthday  
Iles and Beverly Cooper  
*In honor of Mr. and Mrs. F. Thomas Kull, Jr. 50th Wedding Anniversary*  
Mr. and Mrs. William Kreutel

*In memory of Sam Weiss*  
Dolores Delin  
Richard Weiss  
*In memory of Scott and David Gittleman*  
Sylvia Gittleman  
*In memory of Warren & Betty Bradley*  
Bradley Family Foundation

## Ashland Public Library Fund

Richard and Darlis Berger

## Ashland Volunteer Fire Department, Washington Fire Company No. 1 and American Fire Company No. 1 Trust

Richard and Darlis Berger

## Carlyon Charitable Trust Fund

Robert and Christine Carlyon

## Craig R. Troutman Memorial Award Fund

Erin Murhon

## Felker-Smith Memorial Fund

Mr. and Mrs. Frank Smith

## Frackville Free Public Library Fund

John Domalakes

## Frank J. Pepper & Thomas J. Pepper Memorial Fund

*In memory of Frank L. Scheuren*  
Richard and Joanne Purcell



Daniel and Cindy Miller  
James C. Bohorad, Esq.  
Estate of Marie T. Scheuren

## Fred G. Smith Golden Rule Scholarship Award Fund

Raymond James Trust

## Frederick T. Kull & Betty A. Kull Memorial Fund

The Kull/Spangler Fund c/o Thrivent Charitable Impact & Investing

## Frederick T. Kull & Betty A. Kull Scholar-Athlete Fund

*In honor of the 50th Wedding Anniversary of Mr. and Mrs. Thomas Kull*

Andrea K. Higginbottom  
Nancy Kull  
Lauren Kreutal, Evan & Melanie Bruner  
Mr. and Mrs. William Kreutel  
Johnson & Johnson  
The Kull/Spangler Fund c/o Thrivent Charitable Impact & Investing

## Friends of the Foundation Fund

Brenden Russell Lewis  
Connie Siminitus  
Friends of Frank Staudenmeier  
G. Fred and Diane Schilling  
Hidden River Credit Union  
Mallory Quaintance  
Mary Emma Dean  
Rachel Marlowe  
Various Contributors - Schuylkill Gives

*In memory of Alan W. Minnig*  
Michael and Colleen Hozella  
Joseph and Diane O'Neill  
Mr. and Mrs. Noble Quandt  
Joyce Clem  
Martin Cerullo

## Gabriel Chamber Ensemble Endowment Fund

Christel Boyd  
Gwen Gentile  
Mary Emma Dean  
Nancy Taras  
Penny Olivia Rhodes

## George J. and Catherine Schilling Memorial Fund

David and Kay Hedrick  
*In memory of George J. Schilling*  
Catherine H. Schilling  
*In remembrance of 71st wedding anniversary*  
Catherine H. Schilling

## Hegins Valley View Rotary Scholarship Fund

Hegins-Valley View Rotary Club #5306

## Hunter William Renninger Memorial Scholarship Fund

Blue Mountain Elementary East  
Blue Mountain Elementary West  
and Cressona Staff  
Rene Boltz  
*In memory of Hunter William Renninger*  
Joseph Kriston  
*In remembrance of Hunter's 14th birthday*  
Maggie Griffiths  
*Most Precious Grandson Hunter Wm. Renninger (Merry Christmas in Heaven Sweet Child)*  
Thomas and Maggie Griffiths

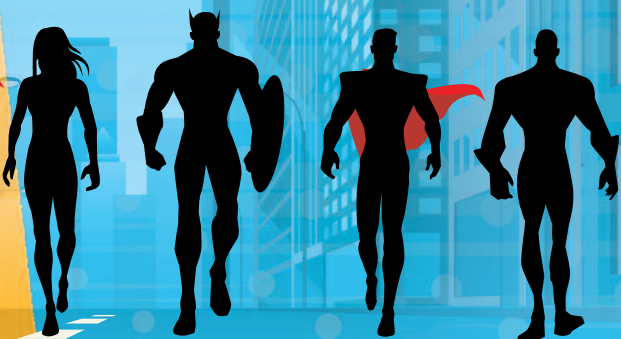
## Isabelle Ross Mettam Performing Arts Fund

*In memory of Charlie Davis*  
Edward Whetstone  
J. Robert Zane, Esq.  
Jeffrey and Donna Spotts  
Jerry Pflueger  
T. James  
Alexander and Gaynell Warcola  
Arlene and Scott McElree  
Carol A. Wolfgang  
Gary J. Ebling and Gloria J. Ebling  
Michele and Kirby Treece  
Mr. Marc Lucarelli  
Ms. Charlotte Stoudt  
Ronald and Donna Kramer

## HERO FUNDS

**Schuylkill Headwaters Association Watershed Conservation Award Fund**  
The Fund honors Dave Derbes and Paul Lohin, two of the founding members of the Schuylkill Headwaters Association and deeply committed to improving the water quality in the Schuylkill River Watershed. They have been actively involved in all functions of the organization, holding various offices and supplying hands-on assistance with the implementation of abandoned mine drainage remediation projects. They are lifelong conservationists and environmentalists with a genuine love of the outdoors.





### **James D. Collins Memorial Scholarship Fund**

Helene Calabrese  
James and Kelli Barrett

### **James R. Kruss Memorial Award Fund**

Kalyn Wagner  
Kaylee Flannery  
Kynslee Flannery  
Ri-Corp. Development, Inc.

### **Jeffrey Donnelly Memorial Award Fund**

Mahanoy Area Education Association  
*In memory of "Our Uncle"*  
Peter & Sarah (Donnelly) Zuckerman

### **Jim and Regina Buffington Scholarship Fund**

Estate of Regina Buffington

### **John and Anna Breitigan Memorial Award Fund**

Jennie Breitigan

### **Joseph M. O'Neill, Jr. Memorial Fund**

William and Mary Lou Hoffert  
*In memory of Alan W. Minnig*  
Dale and Kay Schoeneman  
Ann Price  
Dr. Melissa Burke  
John and Kim Schroeder  
Martina Chwastiak  
Melissa McGoey  
Sandy Baran

### **Lasting Legacy For Pottsville Pass Through - Agency Fund**

Lasting Legacy of Pottsville

### **Lasting Legacy For Pottsville Pass Through Fund**

AJ Reilly  
Angela Altemose  
Brigette Shinton  
Caitlin Goodman  
Cheyenne Gaburick  
Herman Yudacufski Charitable Foundation  
Jean Ann Schwartz  
John Hoffman

Jonathan Randolph  
Jose Garcia  
Justin Becker  
Kevin Sedar  
Sarah Trotman  
Tammra Huben

*In memory of Gayle Brahler*  
Barbara Wollyung  
Bucks County Planning Commission  
Joseph and Nancy Schlitzer  
Margaret Smith  
Mark Weninger  
Paul Gordon  
Stacee Hipp  
Frances Lorenz

### **Leonard L. Ludinsky Memorial Fund**

*in memory of Leonard Ludinsky*  
Allentown Diocesan Lay Teachers Assn.  
Barbara Deffley  
Barbara Ludinsky  
Carol Ludinsky  
Daniel and Jennifer Salvadore  
Eileen Barlow  
First United Methodist Women  
Gary and Lorraine Leander  
Helene Richmond  
John and Barbara Grazel  
John and Cynthia Richmond  
Joseph and Angeline Babatsky  
Joseph and Carol Kalista  
Joseph and Monica Alansky  
Kaczmarczyk Electric & Construction  
Michael and Mary Alice Gownley  
Mr. and Mrs. Michael Konidas  
Robert and Bonnie Schreppe, Sr.  
Ronald and Sally Gennarini  
Rosemary Demko  
Thomas and Teckla McCabe  
Verna Ryan  
Beth Williams

### **Mabel and Harry Strouse Memorial Fund**

*In memory of Harry Strouse, Esq.*  
Deanna Hogan and Brenda Swank

### **Marian P. Brennan Scholarship Fund**

Daniel and Christine Brennan

### **Marie Bossler Phi Delta Kappa Kutztown Chapter Scholarship Fund**

*In honor of Angie Babatsky*  
Stacey Schott

### **Mary E. and Warren E. Wert and Gertrude C. Shuler Memorial Fund**

Robert and Christine Carlyon

### **Mary I. Kull Memorial Fund**

The Kull/Spangler Fund c/o  
Thrivent Charitable Impact  
& Investing

### **Mothers Memorial Fund**

Borough of Ashland

### **Nuremberg Community Ambulance Association Fund**

Nuremberg Community  
Ambulance Association, Inc.

### **Paul M. Krukas Memorial Award Fund**

Herman Yudacufski Charitable  
Foundation  
James and Carol Whalen  
Kenneth Huebner  
Mahanoy Area Education  
Association  
Steve and Marjorie Cotler

### **Pfluger-Przybylik Family Scholarship Fund**

Kurt and Bonny Pfluger

### **Pottsville Enrichment Fund**

Charles Baber Preservation Trust

### **Ringtown Area Library Fund**

Ringtown Area Library  
Association

### **Roy P. Steeley Music Scholarship Fund**

North Schuylkill Band Boosters  
Association

### **Schuylkill County Medical Society Alliance Award Fund**

Amrit Narula  
Anna Laychock  
Barry Jenkins, M.D.  
Benjamin Darhun  
Carlos Villarreal  
Carol Adukaitis  
Christine Stoudt  
David Krewson  
David Moylan  
David Young  
Denis and Marilyn Bane  
Dr. and Mrs. Abdul Wahhab  
Dr. and Mrs. Gerald Ravitz  
Dr. Harwinder Ahluwalia  
Dr. Leslie Dubowitz  
Dr. Stanley Gorski  
Glen and Heather Marino  
Greg and Jeanne Elberfeld  
Gubbi Ranganath  
Ilene Weizer  
Ivan Grynyskin  
James Langon  
James Xenophon  
John Chawluk  
John Russo  
Joseph Zawisza  
Kalmen Feinberg  
Kimberly Hashin, M.D.  
Kristina Thornburg  
Manish Kumar Mishra, M.D.  
Marc Barbe  
Marylou Rainone  
Matthew Sophy  
Michael Lado  
Mohammad Akbar, M.D., F.A.C.S.  
Nancy Lado  
Pat Modarress  
Rajendra Singh M.D., P.C.  
Richard Russell, Jr.  
Robert and Lisa Zimmerman  
Robert Greco  
Robert Kimmel, M.D., FACS., PC.  
Robert Peters, III, M.D.  
Robert Terlingo  
Ruth Bohnenblust  
Satish Singla, M.D., P.C.  
Solomon Luo M.D., P.C.  
Thomas Beausang  
Thomas Boran, M.D.  
Thomas Curry  
Various Contributors - Sch.  
Cty. Medical  
Walter Setlock, D.O.  
William Connolly  
William Gianfagna



*Our first donor, who created a fund with \$1,000  
to establish a scholarship in his wife's name.*

# Philanthropists

## Schuylkill Conservation District Endowment Fund

*In memory of Lewis Lutz*

Bernice Rhine  
Bertha Kuniega  
Bob and Kathy Hepler  
Ed and Cindy Ebling  
Elaine Moyer  
Esther Breslin  
Kristen Simons  
Lee and Reba Llewellyn  
Peggy Lutz  
Richard and Linda Clauser  
Steven and Marsha Hepler

## Schuylkill County Historical Society Endowment Fund

*In memory of Joe Jordan*

Schuylkill County Historical Society

*In memory of John Tucker Rehnert*

Schuylkill County Historical Society

*In Memory of Stanley White*

Diana Prosymchak and  
James Haluska, Jr.

## Schuylkill Elder Abuse Prevention Alliance Scholarship Fund

Schuylkill Elder Abuse  
Prevention Alliance, Inc.

## Schuylkill Headwaters Association Watershed Conservation Award Fund

*In honor of Paul Lohin*

Jacob Jr. and Louise Tkachyk Living Trust

## Schuylkill Intermediate Unit Pass Through Fund

*In honor of Gemma Geary*

Albert and Josette Evans  
Azorb Desiccant Solutions  
Joe and Debbie Ferhat  
Kimberly Lorimer  
Allan Cornman  
Alfred Benesch & Company  
Boyer's Food Markets  
Gregory and Lisa Brennan  
Groody Oil LLC  
Hidden River Credit Union  
John and Georgine Quirk  
Joseph and Frances Quirk  
Ken's Tire, Inc.  
Louis and Elizabeth Welikonich  
Mark and Michelena Smith  
Mary Wetzel

MBC Properties, LP  
Mystic Screen Printing & Embroidery  
Newhurst  
Pediatric Therapeutic Services, Inc.  
R & J Transportation, Inc.  
Schuylkill County Board of  
REALTORS®, Inc.  
Service Access & Management, Inc.  
The M&T Charitable Foundation  
Tri-County Insurance Associates

## Susan B. Berezwick and Sgt. Keith T. Berezwick Memorial Education Fund

*In Memory of Sgt. Keith Berezwick*

Alfasigma USA INC

Andrew Smarkanic

Anne Krukas

Anonymous

Carol Blue

Charles Burnett

Dan, Tracy, Felicia and Carson Bro

Debi Swantek

Debra Millard

Dennis Kane

Eileen Kuperavage

Franklin and Sandra Brown

James C. Bohorad, Esq.

James Crossen

Jane Pritiskutch

John and Barbara Grazel

John and Josephine Honus, Sr.

Joseph and Cynthia Delluso

Joseph and Tracy Yutko

Karen Owens

Kenneth Huebner

Kimberly Aschman

Kimberly Denchy

Leslie Richardson

Maria Bereschak

Mark Nelson

Matthew and Lisa Hope

Melissa Grimm

Michelle, Sue and Dan O'Connell

Mike and Sheri Wenerowicz

Mr. and Mrs. Daniel Polca

Nancy Harris

Notre Dame Club of Schuylkill County

Patricia Marquardt

Paul and Donna Peca

Paul Babinsky

Ralph Bley

Randal and Jacqueline Harner

Richard and Jane Gonzalez

Robert Barrett

Ronald and Margaret Sadusky  
Rosellen Yutko  
Shenandoah Police Department  
Tim Krukas  
Tom and Teckla McCabe Family  
William Allen, Jr.  
Susan Frederick  
Mountain Valley Golf Course

## The Andrew and Laurretta Olinick Memorial Scholarship Fund

Stephen and Jan Olinick

## The Cepheus Memorial Award Fund

David and Susan Morgan  
YourCause, LLC Trustee for  
Pfizer Foundation

## The James J. and Mary Edith Rhoades Scholarship Fund

James J. & Mary Edith Rhoades  
Charitable Foundation

## The John and Ann Snyder Outdoor Fund

Dean and Susanne Schlegel  
John and Lisa Snyder  
Mark and Sharon Snyder  
Peter and Ann Lebengood  
Richard and Darlis Berger

## Tim Stine Memorial Fund

Donald and Dorothy Deaven  
Elaine Stine  
Karen Harley  
Maurice and Joyce Lord  
Melissa Raleigh  
Mike Franko Plumbing and Heating  
Richard Stoddard  
Robert and Luana Butensky  
Ronald and Mary Ellen Renninger  
Shirley Kostek  
TransEdge

## Tyler Sincavage Memorial Fund

Scott Graver  
Various Contributors  
*In memory of Tyler*  
Edward and Amanda Sincavage  
*In memory of Edward Zavatsky*  
Al and Diane Boris  
Berger's Market Inc.  
Charles Graver  
Craig Krause, Jr.  
David and Andrea Sekellick  
Don and Peggy Butler  
Edward and Amanda Sincavage  
Edward Slane

Elaine Moyer Rife  
Francis & Kaye Lemke  
Francis Roscoe  
George and Rose Smith  
Gerard & Paula Elenchin  
Gerard and Maryann Harvilla  
Gerard Petronko  
Glen and Heather Marino  
Heath and Heather Renninger  
Jason and Jill Schenck  
Jim and Joann Laudeman  
Jim and Michelle Chicora  
John and Karen Graeff, Jr.  
John and Karen Wank  
Karen Bush  
Kathleen Paul  
Mark and Carol Graver  
Newtown Fish & Game  
Ralph and Lois Donmoyer  
Rev. Krista Roehrig  
Richard and Mae Berger  
Robert and Cecilia Belas  
Rose Michael and Billy Verbosh  
Steven and Jill Hutt  
Thomas and Sandra Mason  
Tom and Louise Horan  
Tony and Janet Gillmore  
William and Brenda Brennan  
William and Jennifer Clark, Jr.

## Washington Fire Company Community Ambulance Fund

Richard and Darlis Berger

## Wilfred C. La Voie Theatrical Fund

Anne E. Chaikowsky-LaVoie

## William J. Jones, Jr. Memorial Award Fund

*In memory of William J. Jones*  
Lisa Marencin  
Elizabeth Jones  
Mahanoy Area Education  
Association

## Thank You...

The Foundation thanks all of our generous donors for contributing throughout 2021. We could accomplish nothing without your support. If we inadvertently omitted a contributor, please accept our sincere regrets.

# A HERO IS

*The accountant who navigated changes in code and filing, then communicated with the client in layman's terms.*

# Statement of Financial Position

DECEMBER 31, 2021 REPORT

## ASSETS

Cash and Cash Equivalents	\$ 1,383,958
Investments:	
Common Stocks	\$ 31,505,514
Preferred Stocks	1,652,694
Mutual Funds	3,794,215
Corporate Bonds	504,452
Fixed Assets - Net of Accumulated Depreciation	19,513

**TOTAL ASSETS \$ 38,860,346**

## LIABILITIES

Funds Held for Other Agencies	\$ 570,332
Deferred Revenues	0
Payroll Liabilities	0
Scholarships Payable	60,708
Accrued Expenses	39,988

**TOTAL LIABILITIES \$ 671,028**

## NET ASSETS

Unrestricted	\$ 5,561
Temporarily Restricted	20,316,984
Permanently Restricted	17,866,773

**TOTAL NET ASSETS \$ 38,189,318**

**TOTAL LIABILITIES AND NET ASSETS \$ 38,860,346**

## HERO FUNDS

### Susan B. Berezwick and Sgt. Keith T. Berezwick Memorial Education Fund

Susie loved and supported her family and friends passionately. She enjoyed the storytelling of life and was a self-proclaimed medical specialist, often offering diagnosis and treatment options for those she loved the most. Sadly, Susie passed away in 2016 after a courageous battle with breast cancer. In 2018, her family established an education award to honor and remember the passionate and loving matriarch, with an emphasis on how family shapes us as people.

Keith loved his family, friends, hockey, golf, holidays, Penn State, and served in the Schuylkill County Sheriff's office for 17 years. Keith's passion for life, and his courage while also battling cancer, will continue to be remembered through this fund.



The official registration and financial information for Schuylkill Area Community Foundation is registered with the Pennsylvania Department of State and may be obtained by calling toll free, within Pennsylvania, 1-800-732-0999. Registration does not imply endorsement. Copies of the annual audit report and Form 990 are available at [www.sacfoundation.com](http://www.sacfoundation.com) or the Foundation office.

The Foundation is exempt from federal income taxes under section 501(c)(3) of the Internal Revenue Code and classified as a public charity under section 509(a)(1). It is also exempt from state taxes and is registered with the Pennsylvania Bureau of Charitable Organizations. All contributions are accepted for use subject to the Foundation's Articles of Incorporation and By-Laws.

Financial Report prepared by Jones & Co.

## HERO FUNDS

### William J. Jones, Jr. Memorial Award Fund

Mr. Jones was an educator for forty-two years serving the Spring Grove and Mahanoy Area School Districts. He served in the United States Army and graduated from East Stroudsburg Teacher's College. During his thirty-eight-year tenure at Mahanoy Township, and then at Mahanoy Area he taught elementary physical education and high school health education. Mr. Jones coached football, basketball, wrestling, and track and field. He also served as a bus driver, assistant athletic director and recreation director. As recreation director he created many programs across all ages and multiple sports.



**S**SCHUYLKILL  
**A**AREA *Give Locally. Help Locally.*  
**C**COMMUNITY  
**F**FOUNDATION

216 South Centre Street · Pottsville, PA 17901-3501

Phone: (570) 624-7223 · Fax: (570) 624-7256

[www.sacfoundation.com](http://www.sacfoundation.com)



Follow us on Facebook